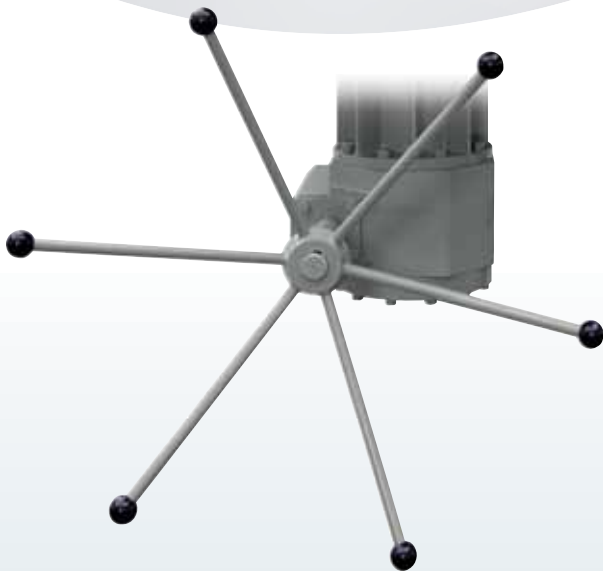




GR | Manual override



Product description

The Manual Override (model **GR**) is designed to manually move the actuator stem using a handwheel. The internal gear is mounted on ball bearings for high efficiency and for long operating life. All STI actuators may be equipped with a manual override to allow operation of the control element when instrument air is not available and the actuator has to be operated. Several sizes are available according to the actuator required. For STI actuators series SCV the gear box is mounted between the actuator and the yoke, for SC series it is mounted on the actuator stem cap side. The manual override can be used as an adjustable retraction stroke limiter. A specific version can be direct mounted to operate a valve where no actuator is installed.

Advantages and options

- **Internal gear mounted on ball bearings to minimize operator effort and long operation life**
- **Available with sandstorm design with stem and main screw bellows**
- **Available to lock movement in any position to keep valve in any required position**
- **Available with adjustable thrust limiter**
- **Available with mechanical chain transmission of the manual override for remote operator access**

Key features

Suitable for

- Standard, Offshore, Sandstorm, copper free ambient condition
- Single and double acting actuators
- Low and high ambient temperature

Technical specifications

Housing materials

- GR 1 = painted aluminum
- GR 2 = painted aluminum
- GR 2,5 = painted cast iron
- GR 3 = painted carbon steel

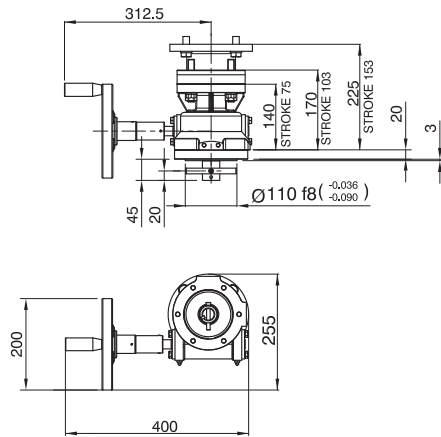
Operating temperature*

- -20°C / +70°C
- -40°C / +70°C available on request
- -20°C / +85°C available on request

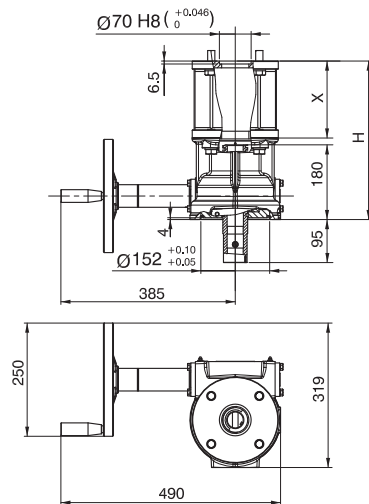
(*) Lower or higher temperature available on request.

Dimensional drawings

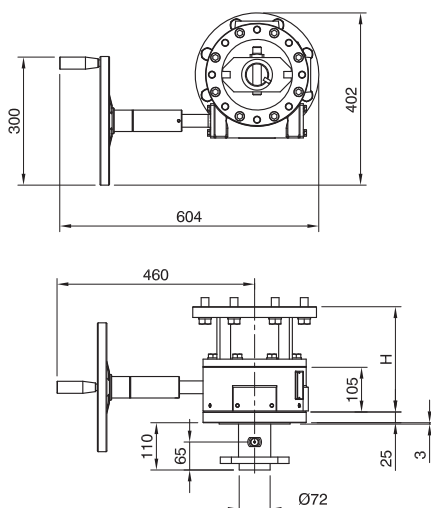
GR 1



GR 2



GR 2.5



model	istance	stroke	weight (kg)	H (mm)	X (mm)
GR 1	GR_153	153.0	22	225	-
	GR_103	103.0	17	170	-
	GR_75	75.0	14	140	-
GR 2	GR_605	605	57	690	520
	GR_555	555	55	640	470
	GR_505	505	53	590	420
	GR_455	455	51	540	370
	GR_405	405	49	490	320
	GR_355	355	47	440	270
	GR_305	305	45	390	220
	GR_255	255	43	340	170
	GR_205	205	40	300	-
	GR_153	153	38	247	-
	GR_103	103	32	180	-
	GR 2.5	GR_103	103	71	245
GR_153		153	75	295	-
GR_205		205	78	347	-
GR_255		255	82	397	-
GR_305		305	85	447	-
GR_355		355	88	497	-
GR_405		405	91	547	-
GR_455		455	94	597	-
GR_505		505	97	647	-
GR_555		555	100	697	-
GR 3	GR_505	505	240	667	-
	GR_455	455	226	617	-
	GR_405	405	230	567	-
	GR_355	355	225	517	-
	GR_305	305	220	467	-
	GR_255	255	215	417	-
	GR_205	205	209	367	-
	GR_153	153	204	315	-
GR_103	103	199	265	-	

GR 3

