



# TP | Pneumatic pressure switch



## Product description

The Pneumatic Pressure Switch (model **TP**) device has been designed to drive lock-up devices to the safety shut down position in the event supply air pressure falls below the operating safety value. The switching value is easily adjustable and the device allows maintainers to set switching pressure required switch in the safety/shut down function. The switching device operates immediately, even in the case of a gradual air-pressure decrease to the set value. The device will automatically reset after a failure, when the line pressure is 1 bar greater than set pressure to avoid instability around the device set point.

## Advantages

- **Accurate pressure setting**
- **Set screw lockable with nut**
- **Insensitive to vibrations**
- **Small dimensions and light weight allows mounting on lock-up 3 way valve**
- **Reset hysteresis with established safety**

## Key features

### Suitable for

- Standard, Offshore, Sandstorm, copper free ambient condition
- Single and double acting actuators
- Low and high ambient temperature

## Technical specifications



ALUMINUM  
with square plate



STAINLESS  
STEEL 316  
with threaded  
connection

### Housing materials

- Anodized aluminum
- Stainless steel 316

### Operating temperature\*

- -20°C / +70°C
- -40°C / +70°C available on request
- -20°C / +85°C available on request

### Pilot signal connection

- 1/8" NPT

### Operating pressure

- P min = 2 bar
- P max = 7 bar
- Design pressure = 10 bar

### Output connections

- |               |               |
|---------------|---------------|
| <b>Fig. 1</b> | <b>Fig. 2</b> |
| • 1/8" NPT    | • 1/8" NPT    |
|               | • 1/4" NPT    |

### Weight

- Aluminum = 0,4 kg
- Stainless steel 316 = 0,8 kg

(\*) Lower or higher temperature available on request.

## Dimensional drawings

fig. 1

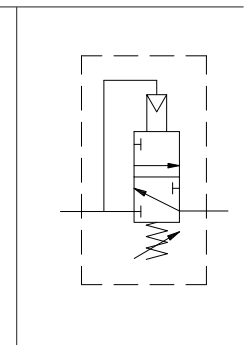
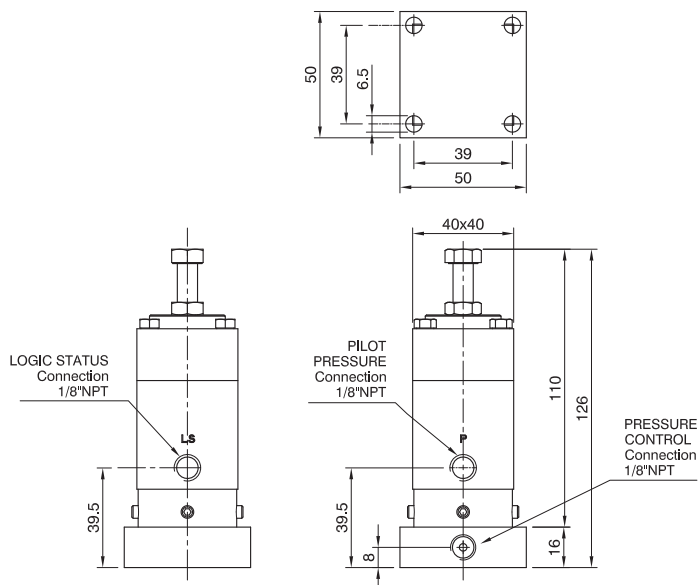


fig. 2

